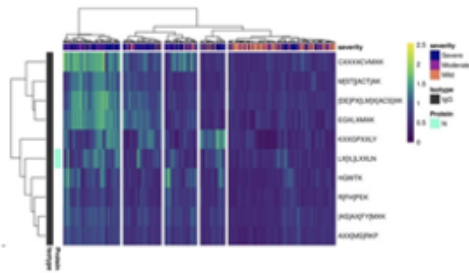


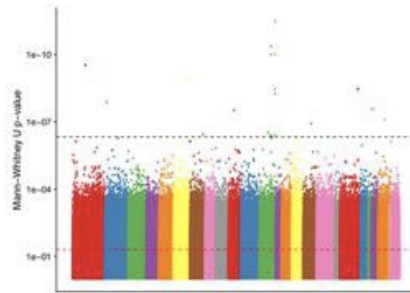
Mapping Human Immunity

Serimmune service: A universal serology assay that identifies disease-specific epitopes across proteins and entire proteomes enabling:

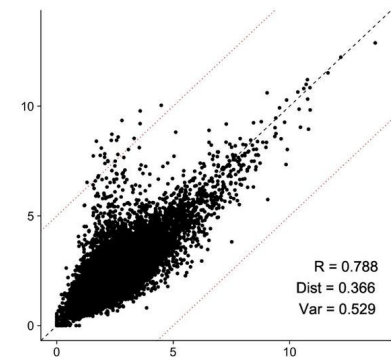
Disease Stratification



Target Identification



Response Measurement



Disease Categories

Autoimmune Disease

Oncology

Infectious Disease

Outcomes

Uncover novel epitopes

Discover unique and specific antigens

Unmask disease associations

Develop novel biomarkers

Profile patient immune response