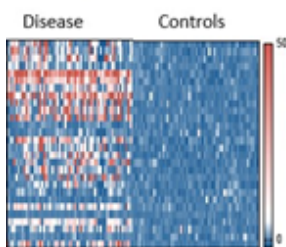
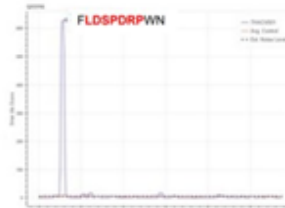


Mapping Human Immunity

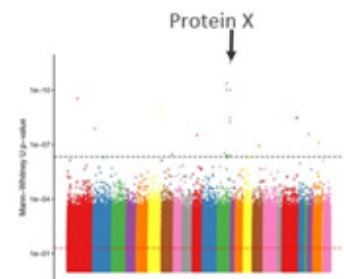
Academic and Pharmaceutical Research



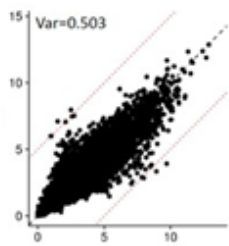
Immune Response in Infection



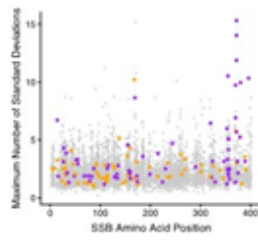
Epitope mapping



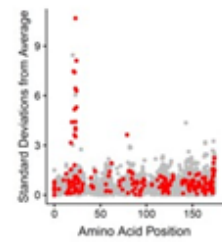
Target identification



Response Measurement



Disease Stratification



Cancer detection

Bacterial

- AntiStreptolysin O, IgG
- Bartonella henselae, IgG**
- Chlamydia, IgG**, IgM**
- Helicobacter pylori, IgG
- Leptospira interrogans, IgG, IgM
- Shigella, IgG

Fungal

- Coccidioides, IgG

*Additional markers available upon request
**In development

Parasitic

- Leishmania, IgG**
- Onchocerca volvulus, IgG
- Plasmodium falciparum (Malaria), IgG
- Schistosoma (pan-species) IgG
- Schistosoma haematobium, IgG
- Schistosoma mansoni, IgG
- Taenia solium (Cysticercosis), IgG
- Toxocara, IgG, IgM**
- Toxoplasma gondii, IgG, IgM**
- Toxoplasma gondii (acute), IgG
- Toxoplasma gondii (chronic/latent), IgG
- Trypanosoma cruzi (Chagas disease), IgG

Tick-borne

- Anaplasma phagocytophilum, IgG, IgM**
- Babesia microti, IgG, IgM**
- Borrelia burgdorferi (Lyme disease), IgG, IgG DTC**, IgM
- Ehrlichia chaffeensis, IgG, IgM**

Autoimmune

- Anti-Ribosomal P, IgG CENPA, IgG
- Deamidated gliadin peptide (Celiac disease), IgG
- Amith Abs, IgG
- SS-B, IgG

Viral A

- Chikungunya Virus, IgG**
- Cytomegalovirus, IgG
- Dengue Virus, IgG
- Epstein-Barr Virus, IgG, IgM
- Epstein-Barr Virus (chronic/latent), IgG
- Hepatitis C Virus, IgG
- Herpes simplex Virus 1, IgG
- Herpes simplex Virus 2, IgG
- Human Immunodeficiency Virus, IgG
- Human Immunodeficiency Virus 2, IgG
- Human T-Lymphotropic Virus 1, IgG
- Human T-Lymphotropic Virus 2, IgG

Viral B

- Parovirus B19, IgG**
- SARS CoV-2 IgG, IgM SARS
- CoV-2 1 motif, IgG** SARS
- CoV-2 IgG vaccine, IgG SARS
- CoV-2 Specific, IgG
- West Nile Virus, IgG
- Zika Virus, IgG, IgM

Other

- HERV-K 5 Gag, IgG
- MAGE A6/3, IgG
- NY-ESO Motif 1, IgG
- NY-ESO Motif 2, IgG
- NY-ESO Motif 3, IgG XAGE, IgG
- p53, IgG